

WYCHEPROOF & DISTRICT

LOCAL COMMUNITY PLAN





OUR LOCAL COMMUNITY PLAN

The Wycheproof community led by Wycheproof Alive have recently come to the end of their 2010-2018 community plan. Funding in 2018 from the Federal Government's Building Better Regions Fund supported the re-engagement of community to explore longer term issues and aspirations looking towards 2030.

The previous community plan has informed this renewed plan which has also captured recent consultation to shape the Buloke 2030 'whole of shire' integrated plan focusing on livability and economic development in the current rural environment.

Residents in and around Wycheproof were invited to share their thoughts through:

- an online survey
- community postcards
- a drop in session
- a focus group
- community door knock
- school visits
- a street pop-up
- a community workshop; and
- draft plan feedback processes.

The Wycheproof & District Local Community Plan is a community owned plan that captures community aspirations across a broad range of areas (not just local government). The plan gives voice to local aims and aspirations and provides an opportunity for involvement by people who are interested in shaping the future of Wycheproof and District.

BENEFITS OF COMMUNITY PLANNING

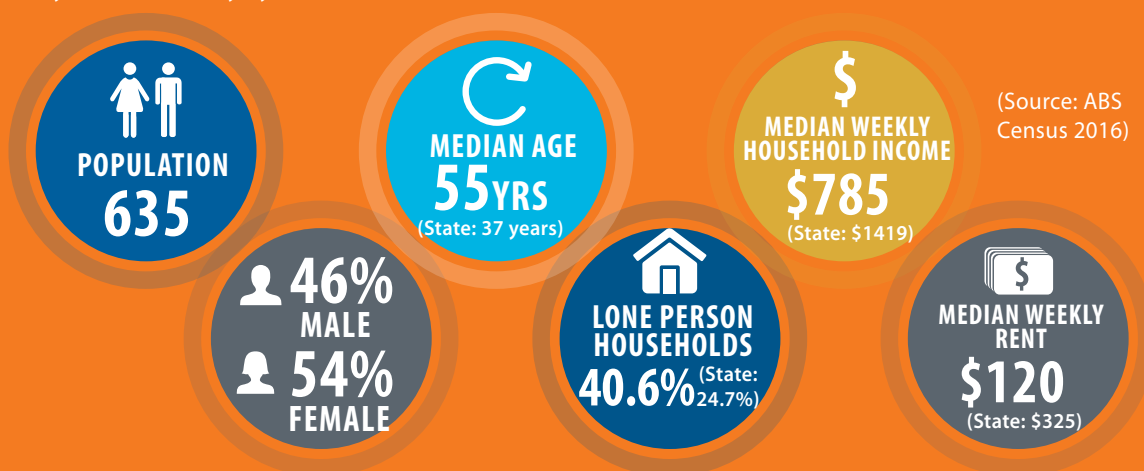
A Community Plan describes the community's long-term vision and aspirations and is a way of directly involving residents in future planning.

The Wycheproof and District community has made a number of achievements as a result of their previous community plans, such as:

- Wycheproof Men's Shed
- Music on the Mount
- Great Grains Festival
- Wycheproof pool upgrade
- Wycheproof Youth Group
- Wycheproof Railway precinct

OUR COMMUNITY

Wycheproof is located in the centre of the Buloke Shire in north western Victoria. The name, Wycheproof, originates from an aboriginal word meaning 'grass on a hill', referring to Mount Wycheproof, which is the smallest registered mountain in the world. The economy is driven mainly by wheat.



OUR STRENGTHS

- ▣ Friendly country town
- ▣ Everyone knows everyone
- ▣ Good community spirit
- ▣ Young people are returning to live
- ▣ Strong sense of community

"I love the community; we chose to retire here".

"People have a deep sense of pride for the town".

"Most kids say g'day when you see them up the street".

OUR ASSETS

- ▣ The Resource Centre
- ▣ The Bakery
- ▣ Shire Office and Town Hall
- ▣ Senior Citizens
- ▣ Hospital
- ▣ Wycheproof P12 college
- ▣ Pool
- ▣ Great sporting facilities
- ▣ Railway through town
- ▣ Centenary Park
- ▣ Mount Wycheproof
- ▣ Wycheproof Courthouse

"The Resource Centre is a vital hub".

"I love our mountain".

OUR CURRENT CHALLENGES

- ▣ Lack of employment
- ▣ Maintaining infrastructure/assets
- ▣ Run down houses
- ▣ Footpaths require attention
- ▣ Government changes to the railway
- ▣ Poor Internet/Mobile service
- ▣ Inclusion of newcomers
- ▣ Size of lifestyle blocks
- ▣ Attracting numbers for sports teams
- ▣ Having to travel long distances to play sport
- ▣ Declining services
- ▣ Lack of activities for young people
- ▣ Declining school numbers
- ▣ Government red tape
- ▣ Lack of variety of housing
- ▣ Lack of childcare
- ▣ The preschool/childcare building needs replacing
- ▣ Shopping locally
- ▣ Many committees in town
- ▣ Weed control
- ▣ Verandas along main street need repair
- ▣ Keeping the Hospital

"What powers do local laws have to help tidy up the town?"

"We know we are small and likely the first to go, but we are nothing without our hospital, especially with our ageing population".

OUR FUTURE CHALLENGES

Looking Towards 2030

Community members highlighted a range of challenges/trends that they felt were important to plan for.

- ▣ Ageing community
- ▣ Declining population
- ▣ Declining services
- ▣ Farms are getting larger
- ▣ Drought
- ▣ Increased reliance on technology

"Some farmers need two phones (one Optus, one Telstra) to support good coverage".

"We need to be innovative when welcoming new people, these people can be our spokespeople".



OUR OPPORTUNITIES

Opportunities for the future have been captured under four key themes which are supported by longer term strategic directions and key actions to achieve these.

Importantly, these key directions were formed through reviewing the previous Community Plan and combining new ideas from recent community discussions.

OUR BUILT AND NATURAL ENVIRONMENT

STRATEGIC DIRECTIONS AND KEY ACTIONS:

SAFE, ACCESSIBLE AND WELL-MAINTAINED COMMUNITY INFRASTRUCTURE.

1. Seek funding for the upgrade of the toilets at the post office and memorial park.
2. Advocate/work in partnership with Council and VicRoads to ensure a safe road network.
3. Renew the bird enclosure in the park and add signage that shares information about bird welfare.
4. Seek funding for the upgrade of the preschool/childcare building.
5. Create a plan for the improvement of footpaths, kerbing and drainage. Prioritise good footpaths leading to the hospital.
6. Review built community assets and explore opportunities for shared facilities and resources.
7. Allocate safe truck parking spaces in close proximity to the main street.
8. Add signage on service roads that informs correct road usage.
9. Seek funding for the improvement of the skate park.
10. Explore the feasibility of a BMX track in the old reservoir.
11. Create two safe well-signed pedestrian crossing points across Broadway.
12. Make a feature of the local water harvesting and storage area for recreation (see Snowtown Project).

BEAUTIFICATION OF STREETScape AND TOWN ENTRANCES.

1. Enhance the Wycheproof Streetscape for both residents and visitors alike.
2. Repair and improve the verandas along the main street.
3. Beautify town entrance areas.

PROTECT, MANAGE AND IMPROVE BIODIVERSITY.

1. Maintain trees and control weeds (especially bindii) on council, crown and private.
2. Apply for a town Fruit Fly Trap and educate community on the management of fruit fly.
3. Work with local laws enforcement to decrease the feral animal population.



OUR COMMUNITY WELLBEING

STRATEGIC DIRECTIONS AND KEY ACTIONS:

ENHANCED COMMUNITY AND SERVICE SUPPORT FOR RESIDENTS WHO ARE VULNERABLE AND OR ISOLATED.

1. Provide regular gopher safety education to the community.
2. Plan for the ongoing sustainability of the community car model.
3. Work together with Council to prepare for the local roll out of the NDIS.

CREATE OPPORTUNITIES THAT ENCOURAGE COMMUNITY WELLBEING, LIFELONG LEARNING AND SOCIAL CONNECTEDNESS.

1. Work in partnership with Council as it provides library services in Wycheproof.
2. Seek funding for an updated Wycheproof community notice board.
3. Create opportunities to build and strengthen social connections amongst residents.
4. Offer a range of non-sport activities for residents of all ages e.g. night pool and school holiday activities.
5. Seek funding for the purchase of pop-up cinema equipment.

A HEALTHY, SAFE AND ACTIVE COMMUNITY.

1. Advocate for improved promotion and use of tele-health options across the Buloke Shire.
2. Review the local availability of allied health and wellbeing services to ascertain current availability, gaps and future needs.
3. Advocate for the delivery of place-based health and wellbeing services.
4. Advocate for a review of the Victorian Patient Transport Rebate.
5. Advocate for comprehensive and quality place-based GP services in Wycheproof.
6. Create a newcomer welcome process and resources for new residents e.g. Facebook page for new residents.
7. Advocate for an annual hard rubbish collection service.
8. Explore partnerships between towns to field sports teams.
9. Offer and promote come and try days to encourage community involvement in a variety of sports.
10. Investigate community solar schemes that could assist residents to lower their power costs.
11. Review pool hours and season opening and closing to determine community need.

OUR ECONOMY

STRATEGIC DIRECTIONS AND KEY ACTIONS:

INCREASED TOURIST ACTIVITY IN WYCHEPROOF & DISTRICT.

1. Provide local representation for the Buloke Tourism Board.
2. Plan community events that could draw visitors to Wycheproof and district.
3. Promote and further develop Mount Wycheproof for both residents and visitors.
4. Create an Op-Shop Trail Map for Buloke Shire and promote Wycheproof's op-shop.
5. Seek funding to add art on the water tower and silos.
6. Explore ways to feature and promote the uniqueness of the railway in town.
7. Explore the feasibility of a cycle trail from Wycheproof to Charlton through 'Ghost Town'.
8. Beautify and develop facilities at Caravan Park.

PROMOTE THE LIVEABILITY OF WYCHEPROOF & DISTRICT.

1. Broadly promote the benefits of living in Wycheproof.
2. Broadly promote hobby farm opportunities.
3. Increase the provision of childcare services and advocate for rural models of subsidised childcare.
4. Review current and future housing needs to better support a variety of options e.g. units, retirement, and rental housing.

DYNAMIC INDUSTRY, BUSINESS AND EMPLOYMENT.

1. Create a shop-local campaign featuring business owners as champions/role-models.
2. Create a plan to address the number of empty shop fronts e.g. pop up business opportunities, window displays, lights etc.
3. Investigate solar farming and other new industry opportunities that could bring new employment to the area.
4. Advocate for increased economic development/tourism resourcing across the Buloke Shire.

ACCESS TO RELIABLE AND EFFECTIVE TELECOMMUNICATION NETWORKS.

1. Advocate for improved internet services.
2. Advocate for improved mobile phone coverage.

OUR COUNCIL & COMMUNITY LEADERSHIP

STRATEGIC DIRECTIONS AND KEY ACTIONS:

ENHANCED COMMUNITY LEADERSHIP, INVOLVEMENT AND SPIRIT.

1. Continue to plan and conduct regular Wyche Alive meetings. Ensure Wyche Alive is representative, action focussed and positive.
2. Create a Wycheproof newsletter to share key information with the broader community.
3. Review community committee structures to encourage partnering, resource sharing, communication, good governance and decrease duplication of efforts.
4. Explore expanding the youth group to include members up to 25 years of age who could mentor and support younger members.
5. Explore ways to better connect young people across the Buloke Shire.
6. Recognise and support existing volunteers and create a campaign to encourage the involvement of new volunteers, especially younger and 'new' residents.

COUNCIL ADVOCACY, LEADERSHIP AND SUPPORT ON COMMUNITY MATTERS OF IMPORTANCE.

1. Actively connect with the Council representative for Wycheproof to ensure leadership and support from Council with identified community projects.

QUALITY CUSTOMER SERVICE AND IMPROVED RESPONSE TIMES FROM BULOKE SHIRE COUNCIL.

1. Improve Buloke Shire customer service quality and response times e.g. works requests.
2. Timely enforcement of local laws in relation to feral animals and unsafe or dilapidated buildings/houses.



HOW DOES THIS PLAN FIT?

The ten Local Community Plans have informed the development of a 'whole of Buloke Shire' integrated Community Plan. The Buloke Shire Integrated Community Plan will inform Council's planning processes over the next three Council Planning phases up to 2030.



This Plan will also strongly inform the direction of a range of key stakeholder organisations that are connected to Buloke Shire communities.

GETTING INVOLVED

If you would like to get involved in implementing the Wycheproof & District Local Community Plan contact:

- P. 1300 520 520
E. buloke@buloke.vic.gov.au
A. PO Box 1, Wycheproof VIC 3527
367 Broadway, Wycheproof VIC 3527

Buloke Shire Council

PUTTING THIS PLAN INTO ACTION

Implementation of the Wycheproof and District Local Community Plan will be driven by 'Wycheproof Alive'.

A key Council representative will attend meetings to enable leadership and support from Council wherever appropriate. An action plan template has been developed to assist with local project planning and review.