

NANDALY & DISTRICT

LOCAL COMMUNITY PLAN





OUR VISION

Country living,
freedom and
space.

OUR LOCAL COMMUNITY PLAN

The Nandaly community led by the Nandaly Progress Association updated their community plan in 2017. Funding in 2018 from the Federal Government's Building Better Regions Fund supported the re-engagement of community to explore longer term issues and aspirations looking towards 2030.

The 2017 Nandaly Community Plan has strongly informed this renewed plan which has also captured recent consultation to shape the Buloke 2030 'whole of shire' integrated plan focusing on livability and economic development in the current rural environment.

Residents in and around Nandaly were invited to share their thoughts through:

- an online survey
- community postcards
- a drop in session
- a focus group
- a community workshop; and
- draft plan feedback processes.

The Nandaly & District Local Community Plan is a community owned plan that captures community aspirations across a broad range of areas (not just local government). The plan gives voice to local aims and aspirations and provides an opportunity for involvement by people who are interested in shaping the future of Nandaly and District.

BENEFITS OF COMMUNITY PLANNING

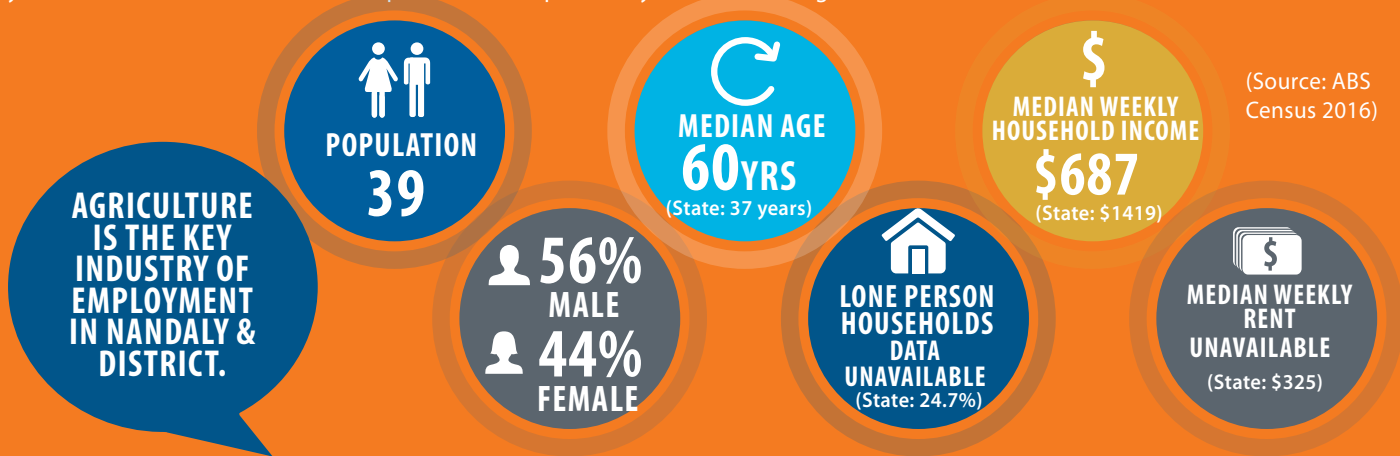
A Community Plan describes the community's long term vision and aspirations and is a way of directly involving residents in future planning.

The Nandaly and District community has already made a number of achievements as a result of their previous community plans, such as:

- New kitchen in the community hall
- Memorial wall
- Tennis Club refurbishment

OUR COMMUNITY

Nandaly is a small town in the Mallee region of Victoria. The town is located 388 kilometres north-west of the state capital, on the Calder Highway. European settlement of the Nandaly district can be traced back to the 1840's but it was in the 1890's and the early years of the 1900's that the townships that make up Nandaly and District began to form.



OUR STRENGTHS

- Strong sense of community
- People look after people
- Lots of open space
- Safe Community
- Great place to bring up kids
- Volunteers are appreciated
- Freedom/less regulated
- Work opportunities
- Water on tap
- Young people are coming back

"Lots of young people are starting to come back to farms".

"You can just about do whatever you like whenever you like".

OUR ASSETS

- Community Hall
- Church
- Park
- Tennis Courts
- CFA
- Good Schools in the area
- Pub
- Cemetery

"The Community Hall is our main community meeting space".

OUR CURRENT CHALLENGES

- Closure of pub
- Population decline
- Poor internet coverage
- Poor mobile phone service
- Lack of new business
- Maintaining town assets and gardens
- Lack of accommodation
- Road safety
- Suitability of roads for farming machinery
- High cost of shire rates
- Attracting skilled workers during harvest
- Tired streetscape

"Sometimes we can try all day but not get a signal on the internet because of poor reception".

"The town started to deteriorate when the Footy club stopped being Nandaly and the School closed in the one year and this was further exacerbated when the Sea lake Nandaly Tigers changed leagues and started travelling south instead of North through Nandaly".

OUR FUTURE CHALLENGES

Looking Towards 2030

Community members highlighted a range of challenges/trends that they felt were important to plan for.

- Ageing Community
- Declining population
- Farms are getting larger
- Accommodating larger farming machinery on rural roads
- Increased reliance on technology
- Access to health and wellbeing services

"Ageing Health is not an issue anymore because people who are here have already made the decision that they will travel for health issues and live here knowing that they have to travel for some health issues".

OUR OPPORTUNITIES

Opportunities for the future have been captured under four key themes which are supported by longer term strategic directions and key actions to achieve these.

Importantly, these key directions were formed through reviewing the 2017 Nandaly Community Plan and combining new ideas from recent community discussions.

OUR BUILT AND NATURAL ENVIRONMENT

STRATEGIC DIRECTIONS AND KEY ACTIONS:

SAFE, ACCESSIBLE AND WELL-MAINTAINED COMMUNITY INFRASTRUCTURE.

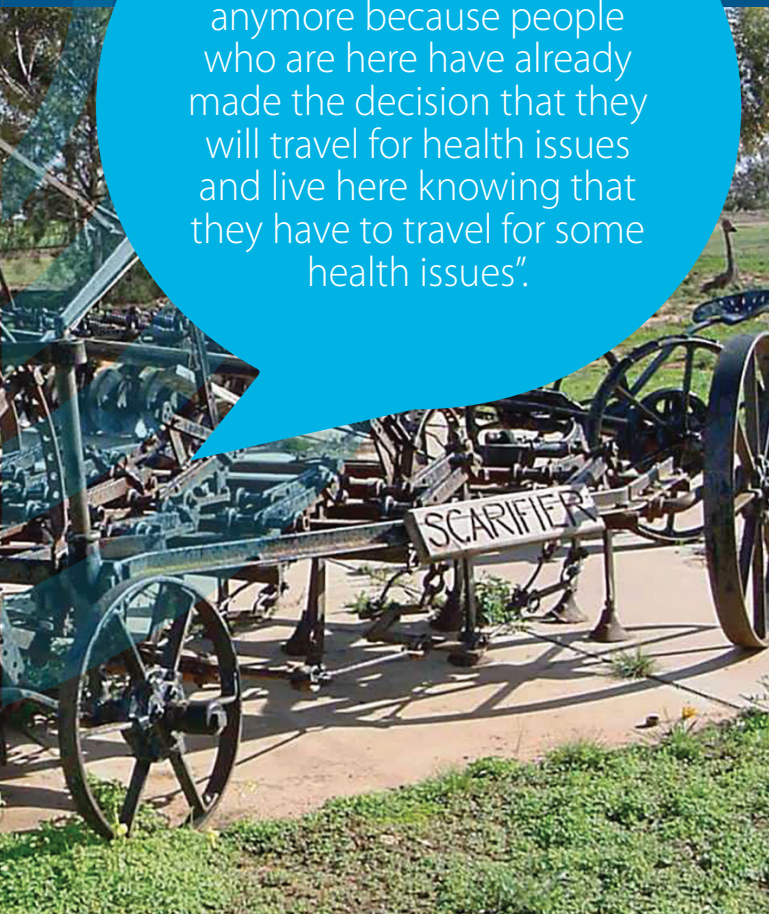
1. Maintain and improve roads to ensure an effective and safe community and agricultural road network.
2. Perform regular maintenance to the community hall, an essential community resource.
3. Seek funding to install air conditioning in the community hall.
4. Seek funding for the improvement of the tennis courts.

BEAUTIFICATION OF STREETScape AND TOWN ENTRANCES.

1. Beautify the streetscape and town entrance.
2. Improve town entrance signage.

PROTECT, MANAGE AND IMPROVE BIODIVERSITY.

1. Maintain trees and control weeds on council, crown and private land.
2. Apply for a town Fruit Fly Trap and educate community on the management of fruit fly.
3. Review volunteer mowing arrangements to ensure appropriate resources and insurances are available.
4. Create and maintain a 'green spot' around the community hall and playground.





OUR COMMUNITY WELLBEING

STRATEGIC DIRECTIONS AND KEY ACTIONS:

CREATE OPPORTUNITIES THAT ENCOURAGE COMMUNITY WELLBEING, LIFELONG LEARNING AND SOCIAL CONNECTEDNESS.

1. Gather local history and explore effective ways of sharing with visitors e.g. town history board.
2. Advocate for regular early years and children's activities in the Buloke Shire.
3. Explore the feasibility of a local playgroup.
4. Seek funding for the installation of a community notice board.
5. Partner with Sea Lake Neighbourhood House to support the delivery of local activities/courses.

A HEALTHY, SAFE AND ACTIVE COMMUNITY.

1. Advocate for the increased use of tele-health services.
2. Advocate for continued comprehensive and quality place based GP services in the Buloke Shire.
3. Offer community activities/events for all ages that encourage social connectedness and physical activity.

OUR ECONOMY

STRATEGIC DIRECTIONS AND KEY ACTIONS:

INCREASED TOURIST ACTIVITY AND IMPROVED AMENITIES FOR RESIDENTS, TOURISTS AND HARVEST WORKERS.

1. Seek funding to create a travellers rest/free camping development at the old pub site.
2. Explore the feasibility of installing a caravan dump point.
3. Explore community owned tavern models and seek community commitment and funding sources (e.g. crowdfunding).

PROMOTION OF THE LIVEABILITY OF NANDALY & DISTRICT

1. Promote the positive benefits of rural living.

ACCESS TO RELIABLE AND EFFECTIVE TELECOMMUNICATION NETWORKS.

1. Advocate for improved internet services.
2. Advocate for improved mobile phone coverage.

OUR COUNCIL & COMMUNITY LEADERSHIP

STRATEGIC DIRECTIONS AND KEY ACTIONS:

ENHANCED COMMUNITY LEADERSHIP, INVOLVEMENT AND SPIRIT.

1. Nandaly Progress Association to hold regular meetings to progress priority actions within its community plan.
2. Encourage and support the involvement of volunteers.
3. Conduct a community skills audit to better understand and utilise the range of skills in the district.

COUNCIL ADVOCACY, LEADERSHIP AND SUPPORT ON COMMUNITY MATTERS OF IMPORTANCE.

1. Designated Council representative to regularly attend Nandaly Progress Association meetings.
2. Advocate/work in partnership with VicRoads to address dangerous blind spots and road hazards.

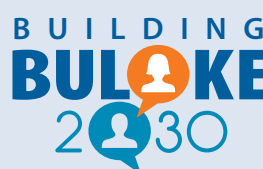
QUALITY CUSTOMER SERVICE AND IMPROVED RESPONSE TIMES FROM BULOKE SHIRE COUNCIL.

1. Improve Buloke Shire customer service quality and response times e.g. works requests.
2. Seek additional Council support to maintain assets/ gardens etc. around town.



HOW DOES THIS PLAN FIT?

The ten Local Community Plans have informed the development of a 'whole of Buloke Shire' integrated Community Plan. The Buloke Shire Integrated Community Plan will inform Council's planning processes over the next three Council Planning phases up to 2030.



This Plan will also strongly inform the direction of a range of key stakeholder organisations that are connected to Buloke Shire communities.

GETTING INVOLVED

If you would like to get involved in implementing the Nandaly & District Local Community Plan contact:

- P. 1300 520 520
E. buloke@buloke.vic.gov.au
A. PO Box 1, Wycheproof VIC 3527
367 Broadway, Wycheproof VIC 3527

Buloke Shire Council

PUTTING THIS PLAN INTO ACTION

Implementation of the Nandaly and District Local Community Plan will be driven by the Nandaly Progress Association.

A key Council representative will attend meetings to enable leadership and support from Council wherever appropriate. An action plan template has been developed to assist with local project planning and review.