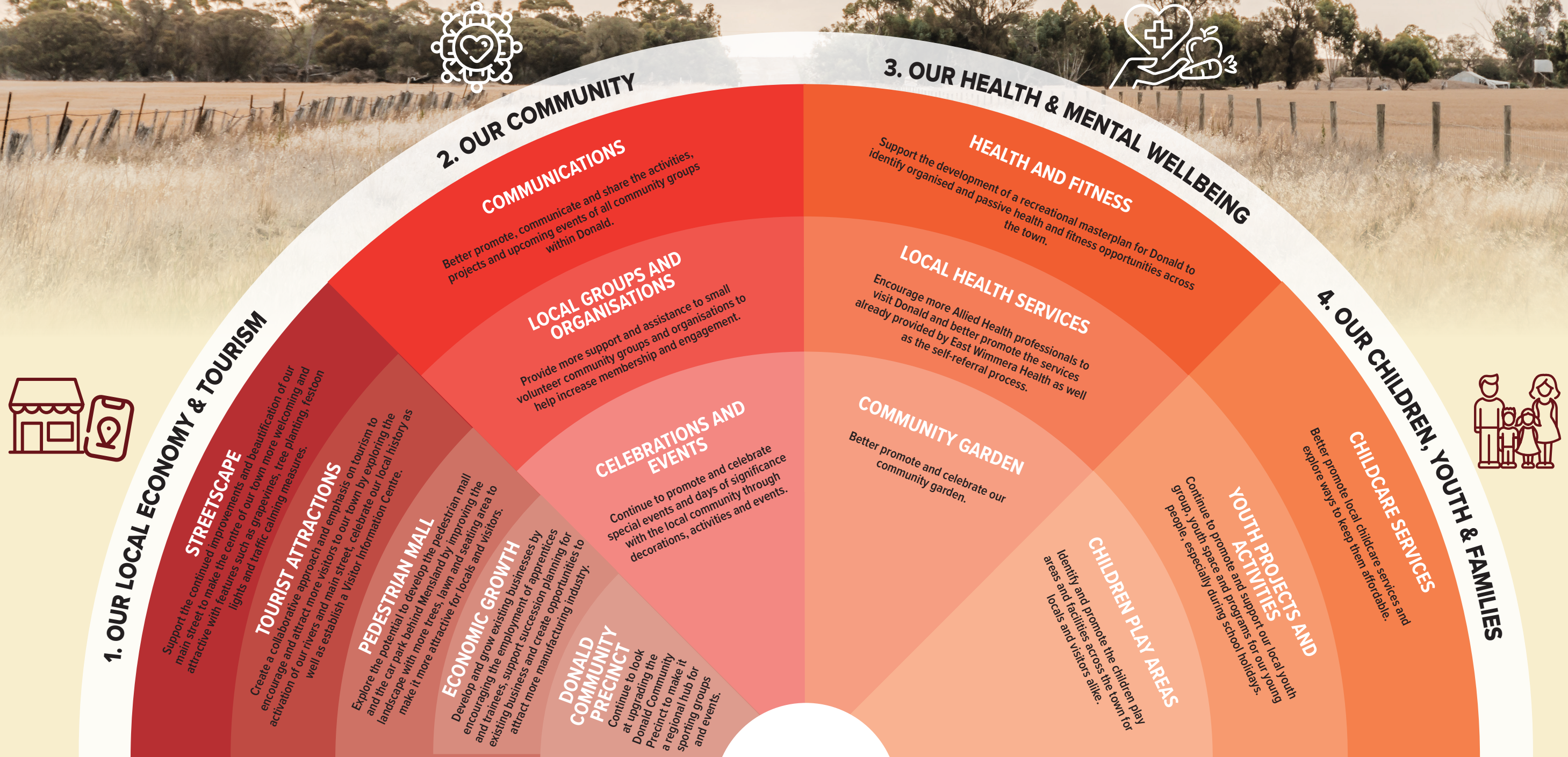


DONALD 2025-2030 COMMUNITY PLAN

The Donald Community Plan 2025-2030 has been developed by Donald 2000 Inc with the aim to strengthen community connections, protect community assets and celebrate community pride. It is based on feedback received from the local community and is designed to be a live document that continues to reflect the progress of the priority projects as they develop.



Through the development of the Donald Community Plan 2025-2030, a number of priorities were identified that have been considered beyond the responsibility of Donald 2000 Inc. These priorities are included as Advocacy Priorities with the aim of highlighting their importance to the Donald community and encourage action by the relevant government agencies and service providers.

5. ADVOCACY PROJECTS



5.1 Housing

Encourage the development of new housing and the development of new estates (incl. serviced building blocks, aged care housing and low-cost units) and development of rural living zones.



5.2 Health Services

Attract and maintain full-time doctors and upgrade facilities.



5.3 Education & Children Services

Maintain and expand where possible, according to need



5.4 Industrial Estate

Seek support and funding for the development of a Tradie Park and the upgrade of sewer and fire service.



5.5 Buloke Shire Planning Scheme

Make changes to the Rural Living Zones (smaller blocks around town), removal of Planning Permit restrictions on Industrial Estate and include a Special Events overlay on land to develop an Events Centre on Esoteric site.

