

NULLAWIL & DISTRICT

LOCAL COMMUNITY PLAN





OUR LOCAL COMMUNITY PLAN

The Nullawil community led by the Nullawil Progress Association updated their community plan in 2015. Funding in 2018 from the Federal Government's Building Better Regions Fund supported the re-engagement of community to explore longer term issues and aspirations looking towards 2030.

The 2015 Nullawil Community Plan has informed this renewed plan which has also captured recent consultation to shape the Buloke 2030 'whole of shire' integrated plan focusing on livability and economic development in the current rural environment.

Residents in and around Nullawil were invited to share their thoughts through:

- an online survey
- community postcards
- a drop in session
- a focus group
- a community workshop; and
- draft plan feedback processes.

The Nullawil & District Local Community Plan is a community owned plan that captures community aspirations across a broad range of areas (not just local government). The plan gives voice to local aims and aspirations and provides an opportunity for involvement by people who are interested in shaping the future of Nullawil and District.

BENEFITS OF COMMUNITY PLANNING

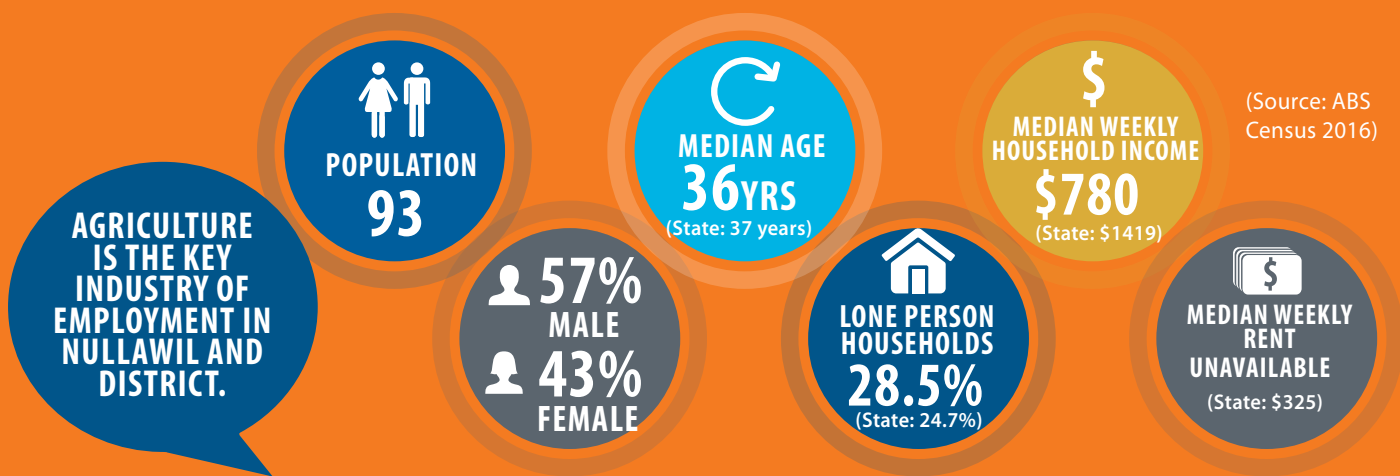
A Community Plan describes the community's long term vision and aspirations and is a way of directly involving residents in future planning.

The Nullawil and District community has already made a number of achievements as a result of their previous community plans, such as:

- Fence along the boundary of the recreation reserve, the dam and Access Grain
- Upgraded kitchen facilities in the Nullawil Community Complex Building
- Enclosure fence around the netball courts
- Safety fence around the children's playground area at the Recreation Reserve

OUR COMMUNITY

Nullawil is a small town in the Buloke Shire, in the Southern Mallee region of Victoria. The name of the town is derived from two Aboriginal words, "Nulla" which means killing stick, and "Wil" derived from the term "willock" meaning Galah.



OUR STRENGTHS

- Caring community
- Strong sense of community pride
- Young people in town
- Good community support
- Quiet place to live
- Great kids

OUR ASSETS

- Nullawil Recreation Reserve
- Football/Cricket Club Rooms
- Netball/Tennis Pavilion
- Fire Shed
- Maternal and Child Health Building
- Catholic Church
- Uniting Church
- Grain Receivals
- Nullawil Primary School
- Nullawil Historical Society

"We are lucky- we have young people here in town".

"There is good community support here, everyone cares about everyone".

"The Historical Society is a great asset; it brings groups to town".

"Our school is so important to the town".

OUR CURRENT CHALLENGES

- Loss of store
- Lots of old vacant buildings in the main street
- Ageing population
- Population decline
- Road disrepair/safety
- Lack of housing during harvest
- Supporting children to access preschool by bus
- Attracting and retaining GP's in the area
- Loss of social opportunities with store gone
- Internet access
- Lack of employment opportunities
- Transport
- Government red tape
- Maintaining Recreation Reserve building
- Run down appearance of town
- Keeping the primary school open
- Less volunteers
- Supporting vulnerable people to access health appointments
- Fire truck and shed need replacing
- Attracting players for sports teams
- Town drainage
- Mobile phone reception

"Our main street is empty; the history is going".

"The feel of the town is different without the store, there is no one to talk to up the street about rain etc."

"Red-tape, rules and regulations are costing us too much".

OUR FUTURE CHALLENGES

Looking Towards 2030

Community members highlighted a range of challenges/trends that they felt were important to plan for.

- Ageing Community
- Declining population
- Declining services
- Farms are getting larger
- Increased reliance on technology

“Business opportunities could fall out of having good internet”.

“Ageing is an issue, could be harder for older people to travel for health appointments”.

OUR OPPORTUNITIES

Opportunities for the future have been captured under four key themes which are supported by longer term strategic directions and key actions to achieve these.

Importantly, these key directions were formed through reviewing the 2015 Nullawil Community Plan and combining new ideas from recent community discussions.

OUR BUILT AND NATURAL ENVIRONMENT

STRATEGIC DIRECTIONS AND KEY ACTIONS:

SAFE, ACCESSIBLE AND WELL-MAINTAINED COMMUNITY INFRASTRUCTURE.

1. Plan and seek funding for the future needs of the shared Recreation Reserve building (including a review of the management model) so that it can continue to be a functioning and well maintained facility for Nullawil sporting and community groups.
2. Advocate/work in partnership with Council and VicRoads to ensure a safe road network.
3. Regularly mow road ‘triangle’ point and road sides to ensure driver visibility and safety.
4. Seek funding for upgraded public toilets in Nullawil.
5. Secure water to ensure recreation spaces and public areas can be maintained.
6. Explore the feasibility of a shared community complex with a fire shed, community store, toilets and library in the main street.
7. Create a plan for the improvement of footpaths, kerbing and drainage.
8. Advocate to VicRoads to repair the road in front of the post office.

BEAUTIFICATION OF STREETScape AND TOWN ENTRANCES.

1. Enhance and renew the Nullawil Streetscape for both residents and visitors alike.
2. Beautify town entrance areas.

PROTECT, MANAGE AND IMPROVE BIODIVERSITY.

1. Maintain trees and control weeds on council, crown and private land.
2. Apply for a town Fruit Fly Trap and educate community on the management of fruit fly.
3. Seek funding to stock Cokum reserve with fish.

OUR COMMUNITY WELLBEING

STRATEGIC DIRECTIONS AND KEY ACTIONS:

ENHANCED COMMUNITY AND SERVICE SUPPORT FOR RESIDENTS WHO ARE VULNERABLE AND OR ISOLATED.

1. Explore the ability of the Wycheproof and Birchip community cars to support Nullawil residents to attend health appointments.

CREATE OPPORTUNITIES THAT ENCOURAGE COMMUNITY WELLBEING, LIFELONG LEARNING AND SOCIAL CONNECTEDNESS.

1. Develop the concept of the community store as a key point of connectedness in Nullawil.
2. Work in partnership with Council as it provides library services in Nullawil.
3. Advocate for pre-school staff support to assist children to board the school bus after sessions.
4. Create opportunities to build and strengthen social connections amongst residents.
5. Advocate for the continued operation of the Nullawil Primary School.
6. Explore opportunities to support community involvement and inclusion of new Nullawil residents.
7. Review the location of the community notice board to determine the best place for it.
8. Advocate for access to child care services.

A HEALTHY, SAFE AND ACTIVE COMMUNITY.

1. Seek funding for the development of a community gym.
2. Advocate for an annual hard rubbish service.
3. Advocate for improved promotion and use of tele-health options across the Buloke Shire.
4. Review local availability of allied health and wellbeing services to ascertain current availability, gaps and future needs.
5. Advocate for a review of the Victorian Patient Transport Rebate.
6. Advocate for comprehensive and quality place based GP services in Buloke Shire.



OUR ECONOMY

STRATEGIC DIRECTIONS AND KEY ACTIONS:

INCREASED TOURIST ACTIVITY IN NULLAWIL & DISTRICT.

1. Provide local representation for the Buloke Tourism Board.
2. Explore events that could draw visitors to Nullawil and district.
3. Promote the Historical Museum to attract visitors to the area.

PROMOTE THE LIVEABILITY OF NULLAWIL & DISTRICT.

1. Broadly promote the benefits of living in Nullawil.
2. Develop a Nullawil & District brochure/website to actively promote the area.

DYNAMIC INDUSTRY, BUSINESS AND EMPLOYMENT.

1. Explore funding opportunities and models for a community operated store.
2. Explore funding opportunities for a local community 'caravan park' model to offer accommodation options for both harvest workers and visitors.
3. Advocate for increased economic development/tourism resourcing across the Buloke Shire.
4. Investigate solar farming and other new industry opportunities.

ACCESS TO RELIABLE AND EFFECTIVE TELECOMMUNICATION NETWORKS.

1. Advocate for improved internet services
2. Advocate for improved mobile phone coverage.



OUR COUNCIL & COMMUNITY LEADERSHIP

STRATEGIC DIRECTIONS AND KEY ACTIONS:

ENHANCED COMMUNITY LEADERSHIP, INVOLVEMENT AND SPIRIT.

1. Plan and conduct regular Nullawil & District Progress Association meetings; explore opportunities to revitalise membership.
2. Share key community group information with Nullawil residents through the Nullawil Facebook page.
3. Recognise and support existing volunteers and create a campaign to encourage the involvement of new volunteers, especially younger and 'new' residents.

COUNCIL ADVOCACY, LEADERSHIP AND SUPPORT ON COMMUNITY MATTERS OF IMPORTANCE.

1. Actively connect with the Council representative for Nullawil to ensure leadership and support from Council with identified community projects.
2. Seek support from Council to provide assistance with writing grant applications.

APPROPRIATE AND TIMELY LOCAL LAWS ENFORCEMENT.

1. Timely enforcement of local laws in relation to unsafe or dilapidated buildings/houses.

QUALITY CUSTOMER SERVICE AND IMPROVED RESPONSE TIMES FROM BULOKE SHIRE COUNCIL.

1. Improve Buloke Shire customer service quality and response times e.g. works requests.
2. Ensure that timely feedback and communication occurs (closing the feedback loop) following community consultation.



HOW DOES THIS PLAN FIT?

The ten Local Community Plans have informed the development of a 'whole of Buloke Shire' integrated Community Plan. The Buloke Shire Integrated Community Plan will inform Council's planning processes over the next three Council Planning phases up to 2030.



This Plan will also strongly inform the direction of a range of key stakeholder organisations that are connected to Buloke Shire communities.

GETTING INVOLVED

If you would like to get involved in implementing the Nullawil & District Local Community Plan contact:

- P. 1300 520 520
E. buloke@buloke.vic.gov.au
A. PO Box 1, Wycheproof VIC 3527
367 Broadway, Wycheproof VIC 3527

Buloke Shire Council

PUTTING THIS PLAN INTO ACTION

Implementation of the Nullawil and District Local Community Plan will be driven by the Nullawil Progress Association.

A key Council representative will attend meetings to enable leadership and support from Council wherever appropriate. An action plan template has been developed to assist with local project planning and review.